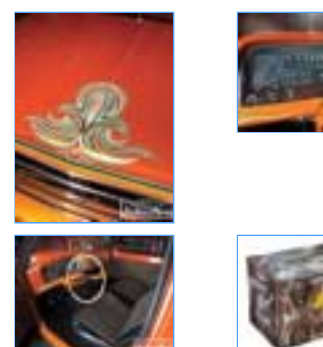


Home » Featured Cars » 1988 Chevy S10 - Keepin' It Gangsta



Related Photos



[View More Photos](#)

1988 Chevy S10 - Keepin' It Gangsta
Three Weeks Till SEMA

May, 2010
By Mike Alexander, John Mata, Jr.
Photography by Henry Z. DeKuyper

These days, there isn't much that hasn't been done before. Sure, there's plenty of crazy front-end conversions, taillight and motor swaps, and tons of mods that haven't been tried, but for the most part, it's probably been done in one way or another. That's where the tale of these two killer minis comes into play. You see, a little style and proper planning go a long way to really pull off the right look. Ya, old school has been done before, but not quite like this. This month's cover features two very unique minis that have both been built to pay homage to customs of the past. Both owners found themselves battling the clock for the SEMA crunch, but with an amazing group of friends, both Tom McWeeny and Mike Bach more than pulled it off-they nailed it! What's old has certainly become new again, but not every truck can pull off the old-school look quite this perfectly. The masterminds between these two builds have both built previous custom vehicles and they spent countless hours planning the entire package on these two builds. So sit back and enjoy this trip down memory lane, and pay attention to all the key details that it took to create two of the baddest "Kustoms" around!



Owner: Tom McWeeny
Ride: 1988 Chevy S-10
Hometown: Downey, CA
Club: Relaxed Atmosphere



Under The Gun

We've all been there before. Staring at a newly purchased truck and swearing up and down to ourselves that any modifications made to it will be few and modest.

But since Tom McWeeny, better known as "T-Mac", has a Mini Truckin' cover truck and a few other notable feature trucks under his belt, this first generation S-10 didn't stand a chance against becoming yet another custom-built notch on T-Mac's belt.

One day, Tom was spending some quality time in the garage with his S-10, and he happened to put a little too much force on the lug nuts and snapped a few of them. With no other option but to go visit a full-service fabrication shop, Tom looked to IMZZ Industries in La Habra, California to make the repairs. While at IMZZ, the shop's phone rang and it so happens that Line-X was on the other end frantically searching for a truck to customize for the upcoming SEMA show. Since Tom was already a known custom truck builder, and given it was common knowledge that his '88 Dime was already on the chopping block, he was easily roped into changing his mini's mild transformation to balls-out wild, in a matter of three weeks. You heard right, THREE WEEKS!



With roughly 21 days to turn his truck into a full-fledged showpiece, Tom dug down to the frame to start building up the suspension, while a group of his friends scrounged up enough sheetmetal to fabricate a few one-off parts. With what seemed like a gusty whirlwind of pages flying off the calendar and a constant blur between day and night, the S-10 was taking shape as the full air suspension, bodywork, and paint began to come alive. Although Tom doesn't recommend building a custom ride in this fashion, he didn't have much of an option with the hands of time robbing him of valuable hours with each and every passing day.

With the nightmare finally behind him, Tom was able to take a step back, catch his breath, and relish in the sounds of admiration that surrounded his truck while at SEMA. Who knew three weeks filled with stress and temporary insomnia could look so good? More than 13 years have passed since Tom's first MT cover truck back in 1996, and being the old-school minitrucker that Tom is, he still continues to build some of the baddest minis in SoCal. For more information on Tom's candy-colored Kustom, check out the Lowdown.



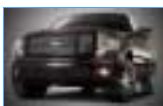
1 | 2 | [Next](#)

[Discuss in Our Forums](#)

Bookmark & Share This Article:

Ford F150 Research

Being one of the most popular cars in its class, the [Ford F150](#) offers good performance and quality. The **2010 F150** is available with the following engine



option: V8, and has a 5 star frontal impact rating for the driver and a 5 star frontal impact rating for the passenger. Also check out the [Suzuki Equator](#) and the [GMC Sierra](#).

Sponsored Links

S10 Custom Truck Parts

Ground Effects, Body Kits, Spoilers Best Prices Online & Price Match.
www.CustomBlvd.com



Dumpster Rentals

The Right Sized Dumpsters When & Where You Need. Call 800.437.2505
PineTree.com/DumpsterRental

Photo Trucks

ClipArt - Pictures Photo Trucks
www.Bing.com

Yard Truck Parts

One- Stop Yard Truck Experts. New, Used, Rentals, Parts & Service
www.yardtruckexperts.com

New Chevy 4x4 Truck Pricing

0% for 72 Months on 2009 Chevy! Call or Email for a Free Quote.
www.PapeChevy.vehicle-outlet.com

- [Home](#) | [Construction Zone](#) | [MT Graffiti](#) | [Lifestyle](#) | [Models](#) | [Featured Trucks](#) | [Truck Reviews](#)
- [Tech](#) | [Truck Shows & Events](#) | [Online Coverage](#) | [Ridin Around](#) | [Wallpapers](#) | [Videos](#) | [Blog](#)
- [Forums](#) | [RSS Feeds](#) | [Site Map](#) | [Contact Us](#) | [Subscribe](#) | [Subscriber Services](#) | [Give a Gift](#) | [This Month](#)
- [Licensing](#) | [Reprints](#) | [User Submitted Content](#) | [Terms of Use](#) | [Privacy Policy](#)



© 2010 [Mini Truckin Web](#),
Source Interlink Media
All rights reserved. WEB-044