

- HOME
- Current issue
- Archives
- Subscribe/Renew
- Media Kit
- About Us/Contact Us
- Dealer/Distributor
- Directory
- Free Info!

SEARCH

[Advanced Search](#)



Online Magazines

- Turf
- Superintendent
- Sportsfield Management
- Tree Services
- Landscape & Hardscape Construction
- Farming
- Growing
- Forest Products Equipment
- Moose River Media SourceBook

Online Communities

- TreeServicesSite
- FarmingForumSite
- Landscape&Hardscape ConstructionSite
- PlowSite
- LawnSite
- SuperintendentSite

Free Subscription



[Subscribe](#)



Please provide feedback on this ad

DEPARTMENTS
What's New!

Related Articles

- [What's New!](#)
- [News](#)
- [Calendar](#)
- [What's New](#)
- [News](#)

Article Tools

- [e-Mail article](#)
- [Print article](#)
- [Send us feedback](#)

[Table of Contents](#)



RainPave and StormPave Clay Pavers

Pine Hall Brick's RainPave and StormPave genuine clay pavers are made for use in a permeable pavement system. The wide space between the pavers allows water to infiltrate through the pavement surface and into the soil rather than drain into streams and rivers. The support system consists of open-graded aggregates without fine particles. RainPave is a Rumbled paver for residential use, designed to look antique and reclaimed. StormPave is more for institutional and commercial projects where joint openings must measure less than .5 inch. Allows the potential to qualify for LEED credits in four ways.



The EcoBlox

Atlantic Water Gardens has released the EcoBlox water matrix for fountains and other pond-free water features. It allows for the storage of 31.5 gallons of water, and features eight-panel construction. Because it was designed with .5 by .75-inch hole sizes, it can be used with smaller sizes of gravel.



Super Truck

The SLT Pro 12GL by Super Lawn Trucks is engineered specifically for landscape contractors. This light-duty truck has a GMC Savana Cutaway cab and chassis with a Vortec 4.8L V-8 engine that offers 15 mpg city and 18 mpg highway. The gross vehicle weight rating is 9,600 pounds, and the payload capacity is 5,263 pounds. The 12-foot enclosed body houses a tool organization system and an on-board fuel station transport system.



A Common Attachment

JLG Industries, Inc. is launching a new family of common attachments for JLG, SkyTrak and Lull brand telehandlers that connect via a common, quick-attach coupler. They include a grapple bucket, 8-foot tower and fork-mounted work platform. A variety of material buckets, truss booms and carriages of varying sizes and fork options are also offered.



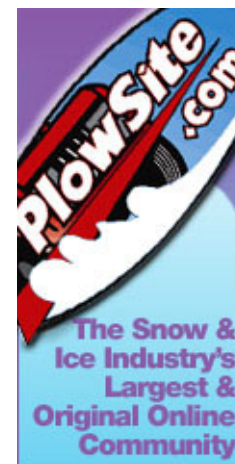
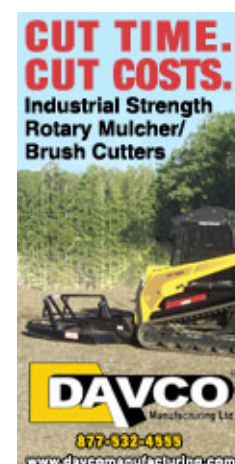
One Tough Diamond

The DiamondBack-X cover is the DiamondBack HD or SE cover coated with LINE-X Xtra, a spray-on urethane coating fortified with DuPont Kevlar. Line-X seals out rust and corrosion, and the Dupont Kevlar coating provides a shiny finish resistant to scratches and UV rays. These top-hauling truck covers can support up to 1,600-pound loads while simultaneously providing cover for tools and equipment in the truck bed. The tri-fold design provides access to the front and back of the bed, and individual panels can be removed to accommodate any hauling need.



Excavator With Wireless Technology

Komatsu America Corp.'s PC88MR-8 mid-sized hydraulic excavator is equipped with KOMTRAX technology that sends machine operating information to a secure Web site utilizing wireless technology. Real-time data, including machine operating hours, machine location and fuel levels are relayed to the Web application for customer viewing and analysis. This unit gets its power from a Komatsu Tier 3, 65 hp diesel engine. It has an operating weight of



18,558 pounds and a maximum digging depth of 15 feet 2 inches with a maximum reach of 23 feet 5 inches. The standard auxiliary hydraulic system flow of 33 GPM can be changed from single direction flow to bidirectional flow.



What's on the Horizon?

The Horizon Marketing Toolkit offers a comprehensive menu of strategies and materials to help landscape contractors promote their services and establish themselves as leading, local professionals. The toolkit offers various customizable items, including direct mail postcards, business cards, on-the-job signs and door hangers that contractors can use to reach new customers and promote their business. It can also help contractors create a Web site and link it to search engines and landing pages.



BID2WIN 2009

BID2WIN Software, Inc. has released BID2WIN 2009, the latest version of its estimating and bidding solution software. In response to user feedback, this updated version includes over 80 new enhancements, features and reports. New capabilities include copying item templates from one item database to another, modifying an estimate status within the open estimate dialog and find/replace cost components.



Check Your Battery's Pulse

From PulseTech Products Corp., the 390PT Digital Battery and System Tester tests 6 and 12-volt batteries and systems, 24-volt systems and lead acid batteries. It provides a graphical state of health or state of charge analysis for batteries, including good and pass, good and recharge, recharge and retest, bad and replace, or bad cell and replace display readouts. As for the system test, measurement readings include cranking volts normal, cranking volts low and cranking volts not detected. The unit is encased in a high-impact plastic case coupled with a shock-resistant rubber boot.



The Extreme Trailer

Felling has created the FT-12EX Extreme trailer that hauls anything from lawn equipment to skid steers to vehicles. It has a gross vehicle weight rating of 13,800 pounds and is available in two deck lengths, 16 and 18 feet. Standard features include two 7,000-pound axles, four 12-by-2-inch electric brakes, four ST235/80R16 LRE radial tires, 12,000-pound drop-leg jack and pressure-treated wood deck. The loaded deck height is 22 inches.



Get Under Cover

Agri-Cover, Inc. now offers its roll-up tonneau covers for 2009 Ford truck models. The covers roll open or closed quickly, allowing full bed usage and no need for removal. Engineered to operate in all four seasons.



Stumped?

Vermeer has introduced the SC1152 and SC652 stump cutters, which are designed to enhance efficiency. Both units are powered by a Cummins diesel engine. The SC1152 has a Tier 3, 110 hp engine, and the SC652 has a Tier 4A, 65 hp engine. A four-bar linkage allows the cutter wheel to move away from the machine as the boom drops down toward the stump, reducing the need to reposition the entire unit. Both units can achieve cutting heights of 31 inches above ground and 25 inches below grade. Full-time four-wheel drive and variable speed control provide traction in difficult ground conditions. An optional remote control provides propel, boom and steering function control. Chips can be moved on the jobsite with an optional, 34-inch wide, front-mounted chip blade.



The Extractor

Team Extractor has developed the Extractor attachment for removing embedded objects, such as overgrown shrubs, small trees, stubborn fence posts and more. It will fit most skid and mini skid steer models. The full-size model weighs 380 pounds and has a force of 15,000 pounds at 3,000 PSI. The mini model weighs 265 pounds and has a force of 10,500 pounds at 3,000 PSI.

Send Us Your Feedback

* Your e-mail:

* Subject:

* Name:

Company:

Title:

*Required Fields

Message:

Enter code below



Yes, I am interested in advertising

[Send](#)

Related Articles



What's New!



News



What's New

[Home](#) | [About Us/Contact Us](#) | [Media Kit](#) | [Subscribe](#) | [Dealer/Distributor Directory](#) | [Free Info](#)

Publications

[Turf](#) | [Superintendent](#) | [SportsField Management](#) | [Tree Services](#) | [Landscape & Hardscape Construction](#) | [Farming](#) | [Growing](#) | [Forest Products Equipment](#) | [Moose River Media Sourcebook](#)

Online Communities

[LawnSite](#) | [TreeServicesSite](#) | [PlowSite](#) | [SuperintendentSite](#) | [Landscape&HardscapeConstructionSite](#) | [FarmingForumSite](#)



© 2009 Moose River Media LLC. All rights reserved. [Privacy Policy](#) | [Terms of Use](#)